



38th Annual Production Sale

Thursday, November 17, 2011
at 1:00 pm
at the ranch in Warner, Alberta



Welcome to our 38th Annual Production Sale

Welcome to LCI's Annual Production Sale. We would like to thank our customers and friends who have supported us and make our progress possible!

The basics is what have made Hereford and Angus breeds attractive over the years. At LCI we want to raise sound, efficient cattle. We strive to make these traits better on a continuous basis. We have been performance and carcass testing from the start. We feel that we have the genetics to complement and improve herds going into these exciting times in the beef industry.

We are offering the top end bull calves and yearling bulls. None of our bulls are saved over from other sales and all the best sell! This year we are also offering a few very elite females. They will work in any herd.

As always, we are here for you. We stand behind our cattle and guarantee that you will have a bull to breed your cows if any problem should arise. We are here to be of service, consider our free wintering program on the bulls or free fall delivery to central points (see sale terms & conditions). Pay half cash sale day with the balance due June 1st, 2012, interest free.

Feel free to contact any one of us listed in the phone directory to help you make the right selection for your herd.

Come join us for lunch and have a day to visit with fellow cattlemen!

The Doenz Family



Brad & Veronica Doenz

Ken & Kristy Robinson

BALOG AUCTION SERVICES INC.

P.O. BOX 786, LETHBRIDGE, ALBERTA T1J 3Z6
PHONE (403) 320-1980 • FAX (403) 320-2660

Fellow Cattlemen!!!

It is with a great deal of pleasure & excitement that I invite and welcome you to the LCI - Doenz Ranches 38th Sale!

What a great feeling and what a great opportunity! Finally a great market with yearlings & calves selling at brand new levels!

Now is the right time to take advantage of the proven, successful breeding program that the Doenz Ranch has to offer! Never in their 67 years in the industry have they ever strayed from the philosophy of the producing genetics that are functional, performance tested and carcass evaluated. Maternal strength and calving ease have always been a priority. Most importantly Doenz Ranches have always been leaders in providing both purebred & commercial herds with seed stock that moves your program one or two steps higher and provides extra profit.

Buy your bulls now!!! Never in our entire career have we ever sold so many finished bulls as we have in the past six months. Doenz Ranches lets you buy your bull now and not have to think about them until spring! What a great advantage.

Reputation People - Reputation Cattle
Good luck with your purchases!

Respectfully,

R.C. (Bob) Balog



Nelson & Paula Doenz

Thursday, November 17, 2011

1:00 p.m.
at the Ranch
(see map on the inside back cover)

Sale Day Phones
(403)642-7696 or (403)642-7694

Nelson & Paula Doenz
(403)642-2380
Brad & Veronica Doenz
(403)642-3894

Cell Phone Directory:
Nelson.....(403)642-7696
Paula(403)642-7695
Brad(403)642-7694

Fax: (403)642-2471 E-mail: doenzranches@gmail.com
PO Box 362, Warner, Alberta Canada T0K 2L0

View catalogue on-line: www.doenzranches.net

Volume Discount

*Purchase 5 to 9 bulls
and take 5% off the total price.
OR
Purchase 10 or more animals
and take 10% off.*

Reference Herdsires



K 64H RIBSTONE LAD 157K

C02764939 CJK 157K May 13 2000
 BW: n/a Adj. WWT: 738 Adj. YWT: 1268

STANDARD RIBSTONE 16E
 STANDARD 16E RIBSTONE 64H
 STANDARD LASS 23E

SNS SUPER PACE ET 61Z
 Dam: K 61Z SUPER LADY 41G
 K 58X MASTER LADY 89Z

Fall 2011 EPD's ~ Top of the breed in blue															
CE	BW	WW	YW	Milk	TM	MCE	SC	CW	Stay	MPI	FMI	Fat	REA	Marb	
4.5	4.8	51.2	89.0	38.2	63.8	3.3	1.9	95.3	0.0	173.9	186.6	-0.024	0.36	0.35	
5%		20%	10%	1%	1%	10%	1%			1%	1%	10%	25%	1%	

Respected world over! A champion bull for performance, maternal and carcass. His sons are setting records for sales North America wide. His daughters are the backbone of our herd today. Proven and predictable genetics.



LCI 157K RIBSTONE 107R

C02862176 LCI 107R January 16 2005
 BW: 94 Adj. WWT: 830 Adj. YWT: 1417

STANDARD 16E RIBSTONE 64H
 K 64H RIBSTONE LAD 157K
 K 61Z SUPER LADY 41G
 LCI KAHLUA 82H
 LCI 82H KAHLUA ANDIE 174M
 LCI 81F ANDIE 214K

Fall 2011 EPD's ~ Top of the breed in blue															
CE	BW	WW	YW	Milk	TM	MCE	SC	CW	Stay	MPI	FMI	Fat	REA	Marb	
4.2	3.7	62.1	103.0	39.4	70.4	3.0	2.2	97.7	0.6	194.2	198.7	-0.033	0.64	0.21	
		1%	1%	1%	1%		1%			1%	1%	5%	10%	10%	

Stacking outstanding genetics is what 107R is about. The only bull I know that has a better EPD profile than 157K. Birth at breed average and top of the breed for everything else. He's been used heavily on heifers with good results. He adds pounds to every mating. His first group of females have calved and they are awesome!

Reference Herdsires



R 0041 NORTH STAR 40U

C02933968 40U March 05 2008

CJH L1 DOMINO 821

CJH L1 DOMINO 0041

CJH STARLET LASS 151
SR BOWMAN 263

R STARLETTE 511

R STARLETTE 112

A bull that is all bull! As a calf he traveled from Nebraska to Alberta and the same day kicked out with 40 heifers. In 42 days he had 97% pregnant. We are really proud how he has nicked on our cow herd. Super easy calving, his calves are early growth. His dam is an elite cow in Ridder's herd. A bull with good carcass. High selling bull in John and Mary Ridder's 2009 production bull sale.

Fall 2001 EPD's ~ Top of the breed in blue

CE	BW	WW	YW	Milk	TM	MCE	SC	CW	Stay	MPI	FMI	Fat	REA	Marb
5.5	2.3	54.1	86.7	24.2	51.3	-0.2	0.7	87.1	-0.5	159.6	169.0	-0.033	0.92	-0.12
5%	25%	15%	15%	15%	10%					5%	1%	5%	1%	



LCI 31R KING STANMORE 159T

C02897303 LCI 159T January 18 2007
BW: 92 Adj WWT: 830 Adj YWT: 1332

AGA 121G STANMORE 20J

LBH 20J STANMORE 31R

LBH 10S STAN LASS 34N
LCI 6K KINGSTON 90M

LCI 90M KINGSTON LADY 123R

LCI 82H MISS KAHLUA 94K

Deep, thick and easy fleshing like his sire. A bull that consistently sires more pigment. Outstanding early growth, yet top milk numbers. His dam is highly regarded in our herd. His first daughters have calved and are an awesome group.

Fall 2001 EPD's ~ Top of the breed in blue

CE	BW	WW	YW	Milk	TM	MCE	SC	CW	Stay	MPI	FMI	Fat	REA	Marb
0.4	6.6	54.4	89.3	24.1	51.3	0.3	1.1	122.8	0.4	156.1	164.7	-0.017	0.11	0.19
		10%	10%	10%	10%		10%	5%		10%	5%	15%		10%



CHURCHILL RAMBO 8116U

C02934840 8116U January 29 2008
BW: n/a Adj WWT: n/a Adj YWT: n/a

GH NEON 17N

GH RAMBO 279R

HR GOLD DOMINO 251E
L1 DOMINO 95461

CL 1 DOMINETTE 825H

CL 1 DOMINETTE 618F

The new addition to our herd bull battery! Calgary Reserve Champion and high selling bull in 2010. 8116 calves are consistently small at birth, yet have good growth. He is a top carcass bull. An attractive bull with style, yet thickly made and a big hip on him.

Fall 2001 EPD's ~ Top of the breed in blue

CE	BW	WW	YW	Milk	TM	MCE	SC	CW	Stay	MPI	FMI	Fat	REA	Marb
-0.5	1.1	46.7	67.8	15.7	39.1	2.7	0.4	69.2	0.1	141.8	117.3	0.004	0.56	0.12
	10%					15%						5%		20%



*Thank you for attending
our 38th sale.
We appreciate
your business.*



Terms and Conditions

TERMS: Cash or half cash – balance due June 1st, 2012, interest free.
If half cash terms are desired, we request that the buyer leave a post-dated cheque. US buyers please note – US funds will be accepted at par; exchange will be calculated per bank exchange rates as at sale day morning.

***NEW* VOLUME DISCOUNT**

Purchase 5 to 9 bulls and take 5% off the total price.
OR
Purchase 10 or more animals and take 10% off.

SALE REPRESENTATIVES:

Bob Balog, Auctioneer.....	403.382.5727
Louis Balog.....	403.331.0611
Brad Balog.....	403.642.7444
Brad Dubeau, CHD.....	403.512.2235
Marc Hotchkiss, Hereford America.	605.866.4495

GUARANTEE: Bulls are guaranteed to be breeders. If failing to be satisfactory breeders, they will be replaced or a credit given on purchase of replacement. They must be returned to us for evaluation of the animal in good health and properly cared for. In any event, the sellers are responsible only to the extent of the purchase price of said animal. Each animal becomes the responsibility of the purchaser as soon as sold. Standard Canadian Hereford Association guarantee applies.

DELIVERY:

Bulls: If the buyer wishes, free **fall** delivery up to **300** miles to central points, and \$100 deducted off price or free **wintering** and the bulls picked up by **April 1st, 2012**. All bulls must be insured, available sale day from Heather Barr, CFI.

Females: Free fall delivery on females from purchases totaling \$2500 or more in a 300 mile radius to central points. Animals must be fully insured!

USA: Animals going to the USA will be delivered through the Coutts/Sweetgrass border with federal health papers. Buyer assumes transportation costs from Sweetgrass, Montana. Again, animals need to be insured and we will co-operate with any other arrangements that need to be made on all animals.

LIABILITY: Mishaps at cattle sales are very rare and every precaution will be taken for the safety of visitors; however, the owners and management assume no liability should an accident occur.

ERRORS: If errors are noted in the catalogue, corrections announced from the stand take precedence over printed material.

ACCOMMODATIONS: Reservations can be made for you, just contact us. There is a paved, lighted airstrip 2.5 miles from the ranch. Contact us to pick you up at the airfield.





Canadian Farm
Insurance
Services
Inc.

HEATHER BARR

Suite 375, 13220 St. Albert Trail
Edmonton, AB T5L 4W1
Toll Free: 1-877-472-8678
Fax: (780) 448-0281
Web: www.cdnfarmins.com

Home: (403) 337-0052
Fax: (403) 337-0052
Cell: (780) 853-7067
Email: hbarr@cdnfarmins.com

Farm • Livestock • Commercial • Personal Lines



MAP



Directions -
 2 miles east of Warner on #504
 & 2 miles north on Rge Rd. #170



All bulls will be wintered free of charge, but they must be INSURED! Buyer can pick up their bulls at their own convenience by April 1st, 2012. If the buyer should want their bulls delivered this fall we will deduct \$100 from the purchase price.

2011 Hereford Bull Calves

Breed averages for Hereford bulls

CE	BW	WW	YW	Milk	TM	MCE	SC	CW	Stay	MPI	FMI	Fat	REA	Marb
0.3	3.6	43.3	70.9	16.6	38.2	0.8	0.7	89.3	-0.2	134.6	123.2	0.002	0.23	0.03



1

LCI 107R RIBSTONE 17Y

C02953075 LCI 17Y Feb. 11 2011
BW: 102 Adj WWT: 764

K 64H RIBSTONE LAD 157K

LCI 157K RIBSTONE 107R

LCI 82H KAHLUA ANDIE 174M
LCI 6H WALDO 125P

LCI 125P NELLIE 105S

LCI T097 TAM O' LASS 43M



This bull has the complete package- stylish, thick, and full of muscle. 17Y has extra ordinary performance EPD's, top of the breed milk, and very good carcass merit. A full brother to our 154U herd sire that we are using and a full brother to our high selling bull last year. His knock out dam is close to flawless, she is pigmented (freckle faced) with an outstanding udder. We would like a whole herd like her.

Fall 2011 E.P.D.'s - Top of the breed in blue

CE	BW	WW	YW	Milk	TM	MCE	SC	CW	Stay	FMI	Fat	REA	Marb
0.9	5.5	54.6	97.4	33.0	60.3	1.5	1.4	100.8	0.8	161.9	-0.007	0.40	0.12
		20%	10%	2%	2%			25%		4%	35%	25%	20%



2

LCI 159T STANMORE 172Y

C02953176 LCI 172Y Feb. 05 2011
BW: 97 Adj WWT: 743

LBH 20J STANMORE 31R

LCI 31R KING STANMORE 159T

LCI 90M KINGSTON LADY 123R
LCI 157K RIBSTONE 4P

LCI 4P GILLIAN 103S

LCI 82H KAHLUA LADY 170N



A bull that comes highly recommended. An all around herd improver with reasonable birth weight, top performance, milk and carcass. He is a short marked pigmented bull that is correct and thickly made like his sire 159T. His dam is out of 4P and is a young super female.

Fall 2011 E.P.D.'s - Top of the breed in blue

CE	BW	WW	YW	Milk	TM	MCE	SC	CW	Stay	FMI	Fat	REA	Marb
0.9	4.9	50.7	83.1	21.7	47.0	1.3	1.2	108.1	1.3	152.2	-0.009	0.12	0.17
		25%	20%	20%	20%		5%	15%		5%	30%		10%



3

LCI 107R RIBSTONE 170Y

C02953173 LCI 170Y Feb. 06 2011
 BW: 104 Adj WWT: 702

K 64H RIBSTONE LAD 157K

LCI 157K RIBSTONE 107R

LCI 82H KAHLUA UA ANDIE 174M
 LBH 20J STANMORE 31R

LCI 31R STANMORE LASS 33T

LCI SUPERIOR GIRL 223H

170Y will command attention sale day and rightly so! A long spined calf with eye appeal. Excellent EPD's for growth, milk, and carcass. His dam, 33T is an excellent 31R daughter and the grandmother, 223H is a all time 99D daughter that is still producing here.

Fall 2011 E.P.D.'s - Top of the breed in blue

CE	BW	WW	YW	Milk	TM	MCE	SC	CW	Stay	FMI	Fat	REA	Marb
1.8	4.7	53.3	85.7	29.7	56.3	2.2	1.6	107.3	0.7	169.0	-0.022	0.28	0.20
		25%	25%	5%	15%			15%		1%	15%	45%	10%



4

LCI 40U NORTH STAR 63Y

C02953107 LCI 63Y Jan. 31 2011
 BW: 74 Adj WWT: 749

CJH L1 DOMINO 0041

R 0041 NORTH STAR 40U

R STARLETTE 511

LCI 31R KING STANMORE 159T

LCI 159T STANMORE MISS 75W

LCI 122P PANDA 58T

A bull with excellent muscle design, wide top, and big hip all in an attractive package! A 74 lb birth weight, yet a 749 lb WW. What a special first calf dam! A soggy thick made 159T daughter that has done a heck of a job on her calf and has stayed in good shape herself. What more could you ask for!

Fall 2011 E.P.D.'s- Top of the breed in blue

CE	BW	WW	YW	Milk	TM	MCE	SC	CW	Stay	FMI	Fat	REA	Marb
3.9	1.5	47.1	76.1	24.4	48.0	1.5	0.8	90.5	-0.1	137.4	-0.010	0.47	-0.10
		15%	45%	45%	20%	20%				30%	30%	15%	



5

LCI BD 159T STANMORE 319Y

C02953183 LCIB 319Y Feb. 05 2011
 BW: 105 Adj WWT: 732

LBH 20J STANMORE 31R

LCI 31R KING STANMORE 159T

LCI 90M KINGSTON LADY 123R

LCI 6H WALDO 125P

LCI BD MISS WALDO 310T

LCI BD DUNBAR GIRL 211P

A calf that grabs your attention with extra pigment and short marked. Loads of volume and shape. Tops in performance and milk. His young dam's udder quality and milk flow is second to none!

Fall 2011 E.P.D.'s- Top of the breed in blue

CE	BW	WW	YW	Milk	TM	MCE	SC	CW	Stay	FMI	Fat	REA	Marb
-0.7	6.6	50.9	84.8	24.0	49.5	0.8	0.9	109.8	0.3	129.4	0.009	0.12	0.07
		25%	20%	15%	15%		20%	10%		35%			30%



6

LCI 107R RIBSTONE 15Y

C02953074 LCI 15Y Feb. 18 2011
 BW: 99 Adj WWT: 769

K 64H RIBSTONE LAD 157K

LCI 157K RIBSTONE 107R

LCI 82H KAHLUA ANDIE 174M
 SMITHSTON TAM O'SHANTER ET2

LCI T097 TAM O'LASS 118N

BP MISS MARK DONALD 237A

Fall 2011 E.P.D.'s- Top of the breed in blue

CE	BW	WW	YW	Milk	TM	MCE	SC	CW	Stay	FMI	Fat	REA	Marb
-1.0	5.2	52.4	88.6	29.7	55.9	1.6	1.2	100.4	0.3	168.6	-0.027	0.42	0.10
		15%	15%	2%	2%	35%	4%	25%	35%	1%	5%	20%	25%

A big hipped calf with extra length, plenty of middle, top performance, elite milk and superior carcass merit. He is short marked and pigmented as his dam is, 118N is a stout heavy cow that never misses!



7

LCI CHINOOK 19Y

C02953077 LCI 19Y Feb. 18 2011
 BW: 96 Adj WWT: 739

GH RAMBO 279R

CHURCHILL RAMBO 8116U

CL 1DOMINETTE 825H
 LCI 6H WALDO 125P

LCI 125P WALDO LADY 28U

LCI 172H MILLICENT ET 1K

Fall 2011 E.P.D.'s- Top of the breed in blue

CE	BW	WW	YW	Milk	TM	MCE	SC	CW	Stay	FMI	Fat	REA	Marb
-0.6	3.8	47.0	81.3	19.4	42.9	1.1	0.7	83.0	0.1	117.8	0.015	0.34	0.01
		45%	35%	45%								30%	

Out of 8116, the Calgary Reserve Champion. A thick heavy muscled calf with a wide back and hind quarter. 28U is a cow that has a right to raise herd sires. Excellent conformation, perfect udder, short marked and pigmented.



8

LCI CHINOOK 211Y

C02953204 LCI 211Y Feb. 09 2011
 BW: 95 Adj WWT: 728

GH RAMBO 279R

CHURCHILL RAMBO 8116U

CL 1DOMINETTE 825H
 LCI 157K RIBSTONE 107R

LCI 107R RIBSTONE LASS 138U

LCI 46P RIBSTONE GAL 134S

Fall 2011 E.P.D.'s- Top of the breed in blue

CE	BW	WW	YW	Milk	TM	MCE	SC	CW	Stay	FMI	Fat	REA	Marb
1.2	3.2	50.4	75.2	23.7	48.9	2.3	1.0	85.1	-0.2	142.5	-0.009	0.39	0.17
		40%	30%	25%	25%					20%		30%	15%

Outcross genetics that has lots to offer! Birth weight below breed average. Performance above average. Super milk and carcass. A short marked calf with extra length and fully pigmented. 138U, his dam is double bred 157K.



9

LCI CHINOOK 138Y

C02953158 LCI 138Y Feb. 03 2011
 BW: 96 Adj WWT: 693



GH RAMBO 279R

CHURCHILL RAMBO 8116U ET

CL 1 DOMINETTE 825H
 K 64H RIBSTONE LAD 157K

LCI 157K RIBSTONE GAL 40S

LCI KD JASMINE 195L

A stylish clean fronted super thick bull calf and a big hip. Reasonable birth weight, performance, milk and top carcass. 40S is right out of the 157K mold. A top Hereford matron!

Fall 2011 E.P.D.'s- Top of the breed in blue

CE	BW	WW	YW	Milk	TM	MCE	SC	CW	Stay	FMI	Fat	REA	Marb
-0.3	3.7	46.0	71.7	22.7	45.7	2.0	0.8	82.5	-0.1	133.3	-0.009	0.38	0.06
		40%		20%		25%	25%			25%	30%	25%	35%



10

LCI BD 159T STANMORE 301Y

C02953084 LCIB 301Y Feb. 05 2011
 BW: 97 Adj WWT: 743

LBH 20J STANMORE 31R

LCI 31R KING STANMORE 159T

LCI 90M KINGSTON LADY 123R
 LCI 157K RIBSTONE 46P

LCI BD 46P SARA 416S

LCI BD MRS KING 17P

This guy has as much muscle as any calf in the sale, wide backed with extra length of body. The 416S cow is a special female that is thick and easy fleshing, with a nice tight udder.

Fall 2011 E.P.D.'s- Top of the breed in blue

CE	BW	WW	YW	Milk	TM	MCE	SC	CW	Stay	FMI	Fat	REA	Marb
0.6	6.4	51.2	82.6	25.0	50.6	0.3	1.1	111.2	0.8	154.5	-0.014	0.12	0.14
		30%	30%	15%				10%		10%	25%		20%



11

LCI 40U NORTH STAR 105Y

C02953132 LCI 105Y Feb. 10 2011
 BW: 80 Adj WWT: 784

CJH L1 DOMINO 0041

R 0041 NORTH STAR 40U

R STARLETTE 511
 LCI 31R STANMORE 81T

LCI 81T STANMORE LADY 105W

LCI 122P PANDA 65T

A curve bender! Light birth weight and super WW with top EPD's. A very eye appealing calf that is short marked and fully pigmented. His dam, a first calf heifer that has done quite a job on her calf. We have used 40U successfully on heifers for 2 seasons. 105Y could be used on heifers.

Fall 2011 E.P.D.'s- Top of the breed in blue

CE	BW	WW	YW	Milk	TM	MCE	SC	CW	Stay	FMI	Fat	REA	Marb
4.4	2.2	51.8	77.0	22.4	48.3	1.5	0.7	93.1	-0.7	145.9	-0.016	0.53	-0.03
	25%	25%	45%	30%	20%					20%	25%	15%	



12

LCI 40U NORTH STAR 107Y

C02953133 LCI 107Y Feb. 24 2011
 BW: 98 Adj WWT: 747

CJH L1 DOMINO 0041

R 0041 NORTH STAR 40U

R STARLETTE 511
 JNHR RED STANDARD 68R

LCI 68R RED ROCK LADY 10W

LCI 67M ROCK SOLID GAL 152R

A calf with extra length of rib and is an athletic muscular bull with an attractive pattern and structural correctness. Powerful performance and 4% for REA, all out of a first calf heifer.

Fall 2011 E.P.D.'s - Top of the breed in blue

CE	BW	WW	YW	Milk	TM	MCE	SC	CW	Stay	FMI	Fat	REA	Marb
-0.6	6.9	58.7	97.6	21.3	50.7	-1.5	0.6	-	-1.1	148.0	-0.016	0.60	-0.27
		4%	3%	25%	10%		40%			10%	15%	4%	



13

LCI 157K RIBSTONE 206Y

C02953069 LCI 206Y Jan. 30 2011
 BW: 90 Adj WWT: 718

STANDARD 16E RIBSTONE 64H

K 64H RIBSTONE LAD 157K

K 61Z SUPER LADY 41G
 LCI 6H WALDO 125P

LCI 125P MISS WALDO 94T

LCI 90M MRS KING 120P

Could be the 157K son you are looking for with tons of length and volume, also in the top 1% of the breed for milk. 94T is a high volume female that is short marked and pigmented with a oh so nice udder! She raised the herdsire that Coulee Crest Herefords bought last year.

Fall 2011 E.P.D.'s - Top of the breed in blue

CE	BW	WW	YW	Milk	TM	MCE	SC	CW	Stay	FMI	Fat	REA	Marb
3.8	3.4	42.6	75.6	30.9	52.2	2.7	1.2	81.9	0.3	120.3	0.025	0.14	0.22
				1%	5%								5%



14

LCI 107R RIBSTONE 130Y

C02953156 LCI 130Y Feb. 01 2011
 BW: 110 Adj WWT: 804

K 64H RIBSTONE LAD 157K

LCI 157K RIBSTONE 107R

LCI 82H KAHLUA ANDIE 174M
 LCI 172H DUNBAR 104K

LCI 104K MISS DUNBAR 128M

LCI 82H MISS KAHLUA 146K

The heavy weight! He is in the top 4% for the breed in WW, top 1% for YW, milk and total maternal. He sports a 804S lb WW at 205 days. Could you imagine a pen of steers out of him! 128M has some age on her but she always produces the good ones. A full brother 10X is one of our top yearling bulls in the

Fall 2011 E.P.D.'s - Top of the breed in blue

CE	BW	WW	YW	Milk	TM	MCE	SC	CW	Stay	FMI	Fat	REA	Marb
-0.6	7.4	58.2	107.2	30.1	59.2	0.6	1.5	111.3	0.4	177.1	-0.020	0.44	0.01
		4%		1%	1%		1%	5%		1%	10%	15%	



LCI 40U RIBSTONE 68Y

C02953109 LCI 68Y Feb. 07 2011
BW: 89 Adj WWT: 777

CJH L1 DOMINO 0041

R 0041 NORTH STAR 40U

R STARLETTE 511

JNHR RED STANDARD 68R

LCI 68R RED STANDARD LADY 2W

LCI 157K RIBSTONE GAL 54R

E.P.D.'s		Top
SC	0.7	
CW	83.7	
Stay	-0.9	
FMI	151.8	15%
Fat	-0.026	
REA	0.63	5%
Marb	-0.14	

Fall 2011 E.P.D.'s - Top of the breed in blue						
CE	BW	WW	YW	Milk	TM	MCE
2.1	4.1	52.3	81.4	22.9	49.0	0.5
		25%	35%	30%	35%	

A stylish calf with growth and performance. Out of a first calf heifer with a 89 lb birth weight, yet 777 lb WW. A bull that can be used on heifers, yet have a growthy calf to sell come fall. 54R is one of our best 157K daughters.



LCI 154U RIBSTONE MAX 35Y

C02953093 LCI 35Y Feb. 09 2011
BW: 94 Adj WWT: 711

LCI 157K RIBSTONE 107R

LCI 107R RIBSTONE 154U

LCI 125P NELLIE 105S

LCI BD OSWALD 6H

BRABETH 6H MARINA 3L

BRABETH 99D GEM 9G

This fellow is a short marked, pigmented calf that is clean fronted with a fresh look to him. Out of our 154U herd bull and a cow we bought from Max & Gail Newby (Brabeth Herefords), Chilliwack, BC.

Fall 2011 E.P.D.'s- Top of the breed in blue													
CE	BW	WW	YW	Milk	TM	MCE	SC	CW	Stay	FMI	Fat	REA	Marb
0.9	5.1	48.6	91.0	24.9	49.2	2.9	1.2	106.1	-1.1	157.6	-0.008	0.21	0.09
		30%	10%	15%	15%	15%	15%	15%		4%	30%		25%



LCI 107R RIBSTONE 2Y

C02953055 LCI 2Y Feb. 09 2011
BW: 92 Adj WWT: 770

K 64H RIBSTONE LAD 157K

LCI 157K RIBSTONE 107R

LCI 82H KAHLUA ANDIE 174M

JNHR DIAMOND 99D

LCI DIAMOND GIRL 38J

LCI SUPER BRITISH 9D

A short marked, pigmented calf that sports light birth weight and a top WW of 770 lbs. 38J, his dam is a grand old cow that doesn't ever miss. She looks a lot younger and still has a perfect udder and faultless feet.

Fall 2011 E.P.D.'s - Top of the breed in blue													
CE	BW	WW	YW	Milk	TM	MCE	SC	CW	Stay	FMI	Fat	REA	Marb
1.7	3.6	48.2	82.7	26.3	50.4	3.1	1.5	97.7	0.3	159.2	-0.021	0.34	0.04
		40%	30%	15%	15%					4%	15%	35%	45%



18

LCI 107R RIBSTONE 20Y

C02953011 LCI 20Y Feb. 27 2011
 BW: 106 Adj WWT: 760

K 64H RIBSTONE LAD 157K

LCI 157K RIBSTONE 107R

LCI 82H KAHLUA ANDIE 174M
 JNHR SILVER STANDARD 435M

LCI 435M SILVER LADY 117S

LCI 157K RIBSTONE LASS 122P

A fancy stylish calf that is short marked and pigmented. A bull with explosive growth and top of the breed for milk. His dam is a big roomy cow that is the right kind.

Fall 2011 E.P.D.'s- Top of the breed in blue

CE	BW	WW	YW	Milk	TM	MCE	SC	CW	Stay	FMI	Fat	REA	Marb
0.3	6.1	62.0	93.7	32.6	63.6	1.5	1.6	100.2	-0.5	159.2	-0.020	0.46	-0.02
		5%	15%	3%	1%			10%		4%	15%	25%	



19

LCI 157K RIBSTONE 7Y

C02953057 LCI 7Y Feb. 15 2011
 BW: 88 Adj WWT: 765

STANDARD 16E RIBSTONE 64H

K 64H RIBSTONE LAD 157K

K 61Z SUPER LADY 41G
 LCI 20J STANMORE 31R

LCI 31R STANMORE LASS 128T

LCI 6N ROBIN HOOD MISS 174R

An own son of 157K with a 88 lb birth weight and a 765 lb weaning weight, good performance epds, top of the breed for milk and very good marbling.

Fall 2011 E.P.D.'s- Top of the breed in blue

CE	BW	WW	YW	Milk	TM	MCE	SC	CW	Stay	FMI	Fat	REA	Marb
3.6	3.6	49.1	83.9	31.6	56.2	3.1	1.6	101.2	-0.5	165.8	-0.013	0.19	0.26
		25%	20%	1%	2%	15%	1%	25%		2%	2%		4%



20

LCI WB CHINOOK 886Y

C02953182 LCI 886Y March 10 2011
 BW: 88 Adj WWT: 639

GH RAMBO 279R

CHURCHILL RAMBO 8116U ET

CL 1 DOMINETTE 825H
 LBH 20J STANMORE 31R

LCI WB 31R STANMORE LASS 859U

JTB 157K RIBSTONE GAL 702S

A young calf with a good future, having a light birth weight, good performance, top milk and carcass numbers. He is short marked and shows himself like a champion. His dam is one of the real good ones. 31R x 157K spells milk!

Fall 2011 E.P.D.'s- Top of the breed in blue

CE	BW	WW	YW	Milk	TM	MCE	SC	CW	Stay	FMI	Fat	REA	Marb
0.9	2.5	47.4	76.1	20.0	43.7	2.6	0.9	84.1	0.0	129.7	0.007	0.40	0.19
	30%	45%		40%	35%					40%		30%	10%

21**LCI 40U NORTH STAR 92Y**C02953184 LCI 92Y March 17 2011
BW: 100 Adj WWT: 752

CJH L1 DOMINO 0041

R 0041 NORTH STAR 40UR STARLETTE 511
LCI 122P PANDA 51T**LCI CLASSIC LADY 186W**

LCI 125P OSWALD LASSY 59S

Fall 2011 E.P.D.'s - Top of the breed in blue							E.P.D.'s		Top
CE	BW	WW	YW	Milk	TM	MCE	SC	0.8	
2.4	5.1	56.0	92.3	25.5	53.5	0.9	CW	88.0	
		10%	10%	10%	4%		Stay	0.1	
							FMI	155.1	5%
							Fat	-0.014	
							REA	0.66	2%
							Marb	-0.06	

A short marked pigmented calf that is deep ribbed and thick topped. A middle of March calf whose first calf dam is freckle faced and short marked. She is doing a tremendous job on her first calf.

22**LCI CHINOOK 23Y**C02953082 LCI 23Y Feb. 15 2011
BW: 86 Adj WWT: 809

GH RAMBO 279R

CHURCHILL RAMBO 8116U ETCL 1 DOMINETTE 825H
AGA 20J STANMORE 21M**CFH 21M SHANIA 815U**

CFH 82N SHANIA 654S

Fall 2011 E.P.D.'s - Top of the breed in blue							E.P.D.'s		Top
CE	BW	WW	YW	Milk	TM	MCE	SC	0.5	
1.0	1.0	45.8	69.3	19.2	42.1	2.9	CW	69.1	
	10%			45%			Stay	0.8	
							FMI	126.3	
							Fat	0.001	
							REA	0.25	
							Marb	0.13	20%

Another curve bender! A 86 lb birth weight, yet 809 WW. A double shot of light birth weight in 23Y with 8116 and 21M. You definitely can sleep easy using 23Y on heifers.

23**LCI BD STANMORE 317Y**C02953164 LCIB 317Y Feb. 03 2011
BW: 98 Adj WWT: 695

LBH 20J STANMORE 31R

LCI 31R KING STANMORE 159TLCI 90M KINGSTON LADY 123R
LCI 157K RIBSTONE 35N**LCI BD RIBSTONE GAL 301R**

LCI BD 82H KAHLUA LADY 150N

Fall 2011 E.P.D.'s - Top of the breed in blue							E.P.D.'s		Top
CE	BW	WW	YW	Milk	TM	MCE	SC	1.1	
0.0	5.5	50.3	75.8	21.7	46.9	1.3	CW	105.6	15%
		35%		35%	30%		Stay	0.8	
							FMI	151.4	15%
							Fat	-0.022	15%
							REA	0.07	
							Marb	0.08	30%

This bull is as thick and meaty as they come! 301R consistently produces the good ones!

24**LCI QUIGLEY CHINOOK 180Y**C02953177 LCI 180Y March 02 2011
BW: 99 Adj WWT: 713

GH RAMBO 279R

CHURCHILL RAMBO 8116U ETCL 1 DOMINETTE 825H
LCI 9K MASTERSON ET 225M**LCI 225M QUIGLEY LASS 197U**

LCI 157K RIBSTONE LASS 82P

Fall 2011 E.P.D.'s - Top of the breed in blue							E.P.D.'s		Top
CE	BW	WW	YW	Milk	TM	MCE	SC	0.8	25%
-2.0	4.5	50.1	81.8	22.4	47.5	0.8	CW	94.8	35%
		25%	25%	20%	20%		Stay	-0.8	
							FMI	118.2	
							Fat	0.016	
							REA	0.26	45%
							Marb	0.10	20%

Extra length, clean made bull with good performance, milk and carcass.

25**LCI 107R RIBSTONE 39Y**C02953097 LCI 39Y Feb. 16 2011
BW: 104 Adj WWT: 671

K 64H RIBSTONE LAD 157K

LCI 157K RIBSTONE 107RLCI 82H KAHLUA UA ANDIE 174M
LBH 20J STANMORE 31R**LCI 31R STANMORE LASS 150T**

LCI 6N ROBIN HOOD MISS 160R

Fall 2011 E.P.D.'s - Top of the breed in blue							E.P.D.'s		Top
CE	BW	WW	YW	Milk	TM	MCE	SC	1.7	
0.5	7.2	59.1	99.9	29.9	59.5	1.9	CW	118.3	3%
		10%	10%	5%	2%		Stay	-0.7	
							FMI	196.3	1%
							Fat	-0.038	5%
							REA	0.30	40%
							Marb	0.19	10%

Top EPD's for WW, YW, milk and carcass. A bull that will increase performance, but will also increase milk in your herd. Take a look at his dam sale day, she is the right kind!

26**LCI KK RANGO 512Y**C02953141 LCI 512Y Feb 20 2011
BW: 94 Adj WWT: 761

CJH L1 DOMINO 0041

R 0041 NORTH STAR 40UR STARLETTE 511
LCI 157K RIBSTONE 107R**LCI 107R RIBSTONE GAL 5W**

LCI KD SAPPHIRE 159H

Fall 2011 E.P.D.'s - Top of the breed in blue							E.P.D.'s		Top
CE	BW	WW	YW	Milk	TM	MCE	SC	1.0	
2.9	4.1	56.0	92.9	25.7	53.7	1.4	CW	94.9	
		10%	15%	15%	10%		Stay	-0.3	
							FMI	161.8	3%
							Fat	-0.020	15%
							REA	0.70	4%
							Marb	-0.07	

He has a reasonable birth weight and a big weaning weight. A bull out of a special cow family on our ranch, 12B & 159H both are foundation cows of our herd today producing well into their teens. 512Y has a big REA EPD and could be used on heifers.



27**LCI 40U NORTH STAR 91Y**C02953123 LCI 91Y Feb. 02 2011
BW: 60 Adj WWT: 720

CJH L1 DOMINO 0041

R 0041 NORTH STAR 40UR STARLETTE 511
LCI 157K RIBSTONE 4P**LCI 4P RIBSTONE LASS 612W**

LCI BRITTANY 27J

E.P.D.'s		
SC	0.9	
CW	77.3	
Stay	-0.4	
FMI	139.0	25%
Fat	-0.006	35%
REA	0.50	20%
Marb	0.03	

Fall 2011 E.P.D.'s - Top of the breed in blue						
CE	BW	WW	YW	Milk	TM	MCE
6.2	-0.8	41.7	70.7	18.4	39.3	3.1
	1%					

This fellow was small at birth, but still had a 720 lb WW. A definite heifer bull prospect. A bull with muscle and performance.

28**LCI 40U NORTH STAR 69Y**C02953110 LCI 69Y Feb. 06 2011
BW: 100 Adj WWT: 741

CJH L1 DOMINO 0041

R 0041 NORTH STAR 40UR STARLETTE 511
JNHR RED STANDARD 68R**LCI 68R RED RIBSTONE LADY 17W**

LCI 157K RIBSTONE GIRL 214N

E.P.D.'s		Top
SC	0.7	
CW	90.6	
Stay	-0.3	
FMI	148.0	15%
Fat	-0.016	20%
REA	0.60	5%
Marb	-0.12	

Fall 2011 E.P.D.'s - Top of the breed in blue						
CE	BW	WW	YW	Milk	TM	MCE
1.0	5.7	55.1	88.2	24.3	51.8	-0.2
		20%	20%	20%	15%	

A solid marked and pigmented calf with a WW of 741 lbs out of a first calf heifer. His grand dam is one of our heaviest milking 157K daughters.

29**LCI 107R RIBSTONE 199Y**C02953174 LCI 199Y Feb. 01 2011
BW: 100 Adj WWT: 673

K 64H RIBSTONE LAD 157K

LCI 157K RIBSTONE 107RLCI 82H KAHLUA UA ANDIE 174M
SMITHSON TAM O'SHANTER ET2**LCI T097 TAM O'LASS 108M**

LCI SUPERIOR GIRL 187H

E.P.D.'s		Top
SC	1.4	2%
CW	101.8	25%
Stay	0.4	
FMI	157.5	4%
Fat	-0.019	
REA	0.36	25%
Marb	0.09	25%

Fall 2011 E.P.D.'s - Top of the breed in blue						
CE	BW	WW	YW	Milk	TM	MCE
-1.4	5.2	52.7	86.8	28.8	55.2	2.8
		20%	15%	3%	2%	15%

This bull is short marked, pigmented and stoutly built. Top EPD's for performance, milk and carcass.

30**LCI 159T STANMORE 29Y**C02953088 LCI 29Y Feb. 26 2011
BW: 110 Adj WWT: 813

LBH 20J STANMORE 31R

LCI 31R KING STANMORE 159TLCI 90M KINGSTON LADY 123R
K 64H RIBSTONE LAD 157K**LCI 157K RIBSTONE GAL 114S**

LCI T097 TAM O'LASS 108M

E.P.D.'s		Top
SC	1.1	
CW	116.4	4%
Stay	0.7	
FMI	162.5	2%
Fat	-0.020	15%
REA	0.16	
Marb	0.15	20%

Fall 2011 E.P.D.'s - Top of the breed in blue						
CE	BW	WW	YW	Milk	TM	MCE
-1.6	7.1	52.4	87.3	26.6	52.8	1.4
		25%	20%	15%	10%	

This fellow weaned off at 813 lbs at 205 days, tops in our herd. If you want those big steer calves to sell here is a bull for you. 114S is a 157K cow that doesn't miss.

31**LCI 159T STANMORE 22Y**C02953080 LCI 22Y Feb. 24 2011
BW: 106 Adj WWT: 730

LBH 20J STANMORE 31R

LCI 31R KING STANMORE 159TLCI 90M KINGSTON LADY 123R
K 64H RIBSTONE LAD 157K**LCI 157K RIBSTONE LASS 33P**

LCI 172H DUNBAR GIRL 103K

E.P.D.'s		Top
SC	1.2	4%
CW	108.5	15%
Stay	-0.8	
FMI	165.0	2%
Fat	-0.022	10%
REA	0.17	
Marb	0.18	10%

Fall 2011 E.P.D.'s - Top of the breed in blue						
CE	BW	WW	YW	Milk	TM	MCE
0.7	6.0	49.7	82.6	24.0	48.8	1.7
		25%	25%	10%	15%	30%

A full brother to the bull that Granum Colony bought last year. Both 22Y and his brother showed excellent muscle expression. 33P is the right kind, a 157K daughter that is easy fleshing, good uddered with excellent feet.

32**LCI 159T STANMORE 169Y**C02953172 LCI 169Y Feb. 03 2011
BW: 105 Adj WWT: 727

LBH 20J STANMORE 31R

LCI 31R KING STANMORE 159TLCI 90M KINGSTON LADY 123R
LCI 6H WALDO 125P**LCI 125P MISS WALDO 89T**

LCI 157K RIBSTONE LASS 74P

E.P.D.'s		Top
SC	1.0	
CW	104.6	20%
Stay	0.7	
FMI	136.0	25%
Fat	0.008	
REA	0.16	
Marb	0.14	20%

Fall 2011 E.P.D.'s - Top of the breed in blue						
CE	BW	WW	YW	Milk	TM	MCE
0.1	6.1	51.5	86.2	24.7	50.4	0.7
		30%	25%	20%	15%	

Right out of the 159T mold! Thick and easy fleshing with top EPD's for growth and milk.



33**LCI 107R RIBSTONE 31Y**C02953091 LCI 31Y Feb. 18 2011
BW: 110 Adj WWT: 783

K 64H RIBSTONE LAD 157K

LCI 157K RIBSTONE 107RLCI 82H KAHLUA UA ANDIE 174M
FA ROCK SOLID BRITISHER 67M**LCI 67M SOLID ROCK GAL 172R**

LCI VIOLA 230H

Fall 2011 E.P.D.'s - Top of the breed in blue							E.P.D.'s		Top
CE	BW	WW	YW	Milk	TM	MCE	SC	CW	Stay
0.6	6.2	57.2	94.9	28.9	57.5	-0.5	1.5	108.4	-0.2
		15%	10%	5%	4%		FMI	171.4	1%
							Fat	-0.027	10%
							REA	0.41	30%
							Marb	0.00	

A bull calf that is short marked, pigmented, and extra growth. A 783 lb WW is a 112 index in our herd.

35**LCI 159T KING STANMORE 1Y**C02953053 LCI 1Y Feb. 06 2011
BW: 108 Adj WWT: 807

LBH 20J STANMORE 31R

LCI 31R KING STANMORE 159TLCI 90M KINGSTON LADY 123R
LCI KAHLUA 82H**LCI 82H MISS KAHLUA 152M**

LCI 172H DUNBAR GIRL 16K

Fall 2011 E.P.D.'s - Top of the breed in blue							E.P.D.'s		Top
CE	BW	WW	YW	Milk	TM	MCE	SC	CW	Stay
-2.2	6.9	49.5	80.8	20.5	45.3	0.1	0.8	103.1	1.0
		35%	35%	35%	30%		FMI	122.6	15%
							Fat	0.004	
							REA	0.10	
							Marb	-0.05	

A bull with an 807 lb WW that is big barreled, thick and red eyed. 152M raised the LCI 83S herd sire Ramseys and Tylers from Cut Knife, SK bought out of our sale as our high seller.

37**LCI 40U NORTH STAR 76Y**C02953116 LCI 76Y Feb. 08 2011
BW: 96 Adj WWT: 733

CJH L1 DOMINO 0041

R 0041 NORTH STAR 40UR STARLETTE 511
LCI 157K RIBSTONE 107R**LCI 107R RIBSTONE GAL 85W**

LCI 37R STANMORE LASS 150T

Fall 2011 E.P.D.'s - Top of the breed in blue							E.P.D.'s		Top
CE	BW	WW	YW	Milk	TM	MCE	SC	CW	Stay
2.8	5.4	57.4	93.3	27.2	55.9	0.6	1.2	104.9	-0.6
		10%	15%	10%	5%		FMI	183.8	1%
							Fat	-0.037	5%
							REA	0.58	15%
							Marb	0.04	45%

A top performance and carcass pedigree. Top milk sires all up front with 40U, 107R, and 31R. 85W is doing a dandy job on her first calf and 150T, the grandmother also has a good bull in the sale.

39**LCI BD 159T STANMORE 320Y**C02953184 LCIB 320Y March 07 2011
BW: 106 Adj WWT: 690

LBH 20J STANMORE 31R

LCI 31R KING STANMORE 159TLCI 90M KINGSTON LADY 123R
PAHL 38J NAUTILUS 41N**LBH 41N MISS NAUTILUS 237R**

AGA 41N MISS STANMORE 217L

Fall 2011 E.P.D.'s - Top of the breed in blue							E.P.D.'s		Top
CE	BW	WW	YW	Milk	TM	MCE	SC	CW	Stay
0.0	5.4	45.0	74.2	21.4	43.9	-0.3	1.0	95.3	0.7
				35%	40%		FMI	134.9	35%
							Fat	-0.007	30%
							REA	0.08	45%
							Marb	0.03	

A naturally thick March calf. His dam is a medium framed, easy fleshing Lilybrook cow.

34**LCI 157K RIBSTONE 188Y**C02953085 LCI 188Y Feb. 06 2011
BW: 102 Adj WWT: 658

STANDARD 16E RIBSTONE 64H

K 64H RIBSTONE LAD 157KK 61Z SUPER LADY 41G
FA ROCK SOLID BRITISHER 67M**LCI 67M ROCKETTE 11S**

LCI 82H KAHLUA LADY 93L

Fall 2011 E.P.D.'s - Top of the breed in blue							E.P.D.'s		Top
CE	BW	WW	YW	Milk	TM	MCE	SC	CW	Stay
1.3	5.7	49.3	81.3	30.9	55.6	0.3	1.3	97.0	0.3
		35%	35%	4%	5%		FMI	150.2	10%
							Fat	-0.010	30%
							REA	0.21	
							Marb	0.13	20%

An own son of 157K and we all know what he has done for the industry! 11S is a thick easy fleshing cow with good feet and legs.

36**LCI 40U NORTH STAR 99Y**C02953129 LCI 99Y Feb. 12 2011
BW: 98 Adj WWT: 734

CJH L1 DOMINO 0041

R 0041 NORTH STAR 40UR STARLETTE 511
JNHR RED STANDARD 68R**LCI WB CLASSIC LASS 176W**

JTB 157K RIBSTONE GAL 702S

Fall 2011 E.P.D.'s - Top of the breed in blue							E.P.D.'s		Top
CE	BW	WW	YW	Milk	TM	MCE	SC	CW	Stay
0.6	5.3	55.3	90.4	23.0	50.7	-0.3	0.7	92.7	-0.5
		15%	15%	25%	30%		FMI	133.8	35%
							Fat	0.000	
							REA	0.56	15%
							Marb	-0.13	

A calf with thickness and good performance. Again a first calf out of a 68R heifer with a 734 lb WW.

38**LCI BD 156U RIBSTONE 307Y**C02953114 LCIB 307Y Feb. 14 2011
BW: 105 Adj WWT: 670

LCI 157K RIBSTONE 107R

LCI 107R RIBSTONE 156ULCI 52N RIBSTONE GAL 120S
JNHR RED STANDARD 68R**LCI BD 68R RED EXTRA LADY 300W**

BP 123H EXTRA LADY 15L

Fall 2011 E.P.D.'s - Top of the breed in blue							E.P.D.'s		Top
CE	BW	WW	YW	Milk	TM	MCE	SC	CW	Stay
-3.4	9.1	69.0	111.6	24.4	58.9	0.8	1.0	116.9	-1.1
		1%	1%	20%	3%		FMI	146.4	
							Fat	0.003	
							REA	0.58	10%
							Marb	-0.06	

Out of a first calf heifer, top of the breed for WW and YW, yet is in the top 20% for milk.

40**LCI CHINOOK 152Y**C02953160 LCI 152Y Feb. 01 2011
BW: 95 Adj WWT: 645

GH RAMBO 279R

CHURCHILL RAMBO 8116UCL IDOMINETTE 825H
JNHR RED STANDARD 68R**LCI 68R STANDARD GAL 83U**

LCI 82H MISS KAHLUA 94K

Fall 2011 E.P.D.'s - Top of the breed in blue							E.P.D.'s		Top
CE	BW	WW	YW	Milk	TM	MCE	SC	CW	Stay
-1.4	3.2	47.8	72.5	17.1	41.0	1.9	0.5	78.2	0.0
	40%	45%					FMI	104.9	
							Fat	0.014	
							REA	0.35	35%
							Marb	-0.03	

Lots of hair, short marked calf that is eye appealing. Could easily use 152Y on heifers.

Hereford Yearling Bulls



41 **LCI 107R RIBSTONE 17X**
 C02939868 LCI 17X Feb. 08 2010
 BW: 99 Adj WWT: 688 Adj YWT: 1172

K 64H RIBSTONE LAD 157K

LCI 157K RIBSTONE 107R
 LCI 82H KAHLUA ANDIE 174M
 BP ROBIN HOOD 6N

LCI 6N ROBIN HOOD MISS 71R
 LCI 81F ANDY GIRL 41L

Fall 2011 E.P.D.'s - Top of the breed in blue						
CE	BW	WW	YW	Milk	TM	MCE
1.6	4.6	50.3	79.5	27.9	53.0	-0.2
		25%	30%	4%	4%	

E.P.D.'s			Top
SC	1.5		1%
CW	91.0		
Stay	-0.9		
MPI	156.5		5%
FMI	148.9		10%
Fat	-0.021		10%
REA	0.30		35%
Marb	-0.08		

This bull is clean fronted, deep sided, and thick. Milk in the top 4% of the breed and very good performance EPD's. His dam has an exceptional udder for her age. If you need a herdsire with a little more age, this fellow could fill the bill.



42 **LCI 107R RIBSTONE 5X**
 C02939746 LCI 5X Feb. 26 2010
 BW: 98 Adj WWT: 764 Adj YWT: 1258

K 64H RIBSTONE LAD 157K

LCI 157K RIBSTONE 107R
 LCI 82H KAHLUA ANDIE 174M
 LCI 6K KINGSTON 90M

LCI 90M MRS KING 111P
 STORMOUNT 17L

Fall 2011 E.P.D.'s - Top of the breed in blue						
CE	BW	WW	YW	Milk	TM	MCE
1.6	5.0	55.8	89.1	28.1	56.0	2.7
		10%	10%	3%	2%	15%

E.P.D.'s			Top
SC	1.4		2%
CW	90.5		20%
Stay	0.0		
MPI	168.6		1%
FMI	158.3		5%
Fat	-0.013		20%
REA	0.44		15%
Marb	0.12		15%

If you are looking to add carcass and performance without giving up birth weight then 5X fits the bill! Short marked and pigmented, he will work on Angus cows.



43 **LCI 107R RIBSTONE 177X**
 C02940085 LCI 177X Feb. 24 2010
 BW: 98 Adj WWT: 660 Adj YWT: 1174

K 64H RIBSTONE LAD 157K

LCI 157K RIBSTONE 107R
 LCI 82H KAHLUA ANDIE 174M
 LCI 172H DUNBAR 104K

LCI 104K DUNBAR MISS 157M
 LCI 82H MISS KAHLUA 121K

Fall 2011 E.P.D.'s - Top of the breed in blue						
CE	BW	WW	YW	Milk	TM	MCE
1.0	4.9	50.5	85.7	31.6	56.9	2.3
		25%	25%	1%	2%	20%

E.P.D.'s			Top
SC	1.5		1%
CW	96.8		
Stay	0.7		
MPI	165.7		2%
FMI	170.2		1%
Fat	-0.033		3%
REA	0.33		30%
Marb	-0.01		

A stout long deep sided bull that will produce those soggy heavy steer calves that Herefords are known for. In the top 1% of the breed for milk. 157M consistently brings a good one home!



44 **LCI 107R RIBSTONE 10X**
 C02939762 LCI 10X Feb. 17 2010
 BW: 108 Adj WWT: 743 Adj YWT: 1333

K 64H RIBSTONE LAD 157K

LCI 157K RIBSTONE 107R
 LCI 82H KAHLUA ANDIE 174M
 LCI 172H DUNBAR 104K

LCI 104K MISS DUNBAR 128M
 LCI 82H MISS KAHLUA 146K

Fall 2011 E.P.D.'s - Top of the breed in blue						
CE	BW	WW	YW	Milk	TM	MCE
-0.9	8.0	62.7	118.0	30.1	61.4	0.5
		1%	1%	1%	1%	

E.P.D.'s			Top
SC	1.6		
CW	120.1		2%
Stay	-0.1		
MPI	176.5		1%
FMI	186.5		1%
Fat	-0.019		15%
REA	0.50		10%
Marb	0.02		50%

A heavy muscled deep sided functional bull. Look at his own performance! He's in the top 1% of the breed for WW, YW, M, TM. 10X is a full brother to 130Y bull calf in the sale and what a hunk he is! 128M is an anchor in our breeding program.



LCI 68R RED STANDARD 166X

C02940082 LCI 166X
BW: 105 Adj WWT: 754

Feb. 15 2010
Adj YWT: 1192

JNHR RED STANDARD 283M
JNHR RED STANDARD 68R
PDHR 3X STAND LASS 72B
K 64H RIBSTONE LAD 157K

LCI 157K RIBSTONE GIRL 214N
LCI ROYAL QUEEN 138C

E.P.D.'s		Top
SC	0.6	40%
CW	86.0	
Stay	-0.8	
MPI	154.3	10%
FMI	110.4	
Fat	0.009	
REA	0.19	
Marb	-0.10	

Fall 2011 E.P.D.'s - - Top of the breed in blue						
CE	BW	WW	YW	Milk	TM	MCE
-2.7	6.9	51.5	78.4	23.8	49.5	0.7
		20%	35%	15%	10%	

A big WW and out of a 157K cow that has past the test of time!



LCI 71S CLOONEY 208X

C02940142 LCI 208X
BW: 104 Adj WWT: 666

March 19 2010
Adj YWT: 1185

LCI 6H WALDO 125P
LCI 125P CLOONEY 71S
LCI 157K RIBSTONE GIRL 126N
LCI 157K RIBSTONE 46P
LCI 46P RIBSTONE LASS 153S
LCI 9M MRS KING 191P

E.P.D.'s		Top
SC	1.0	10%
CW	93.7	
Stay	0.5	
MPI	-	
FMI	122.7	
Fat	0.015	
REA	0.12	
Marb	-0.06	

Fall 2011 E.P.D.'s - - Top of the breed in blue						
CE	BW	WW	YW	Milk	TM	MCE
0.5	7.4	45.9	85.7	26.9	49.8	0.7
		45%	15%	5%	10%	

A short marked red bull that is all bull! He is in the top 5% of the breed for milk. 153S is an easy fleshing correct female.



LCI 156U RIBSTONE 72X

C02944835 LCI 72X
BW: 87 Adj WWT: 734

Feb. 12 2010
Adj YWT: 1180

LCI 157K RIBSTONE 107R
LCI 107R RIBSTONE 156U
LCI 52N RIBSTONE GAL 120S
JNHR RED STANDARD 68R
LCI 68R STANDARD GAL 11U
LCI 155N MRS KING 65R

E.P.D.'s		Top
SC	1.0	
CW	-	
Stay	-0.5	
MPI	-	
FMI	135.0	25%
Fat	-0.009	30%
REA	0.37	25%
Marb	-0.08	

Fall 2011 E.P.D.'s - - Top of the breed in blue						
CE	BW	WW	YW	Milk	TM	MCE
-0.8	5.8	57.4	84.0	26.4	55.1	0.9
		5%	20%	10%	2%	

Light birth weight, good WW, YW, and top of the breed for milk. This short marked pigmented bull could easily be used on heifers.



LCI 81T STANMORE 186X

C02940091 LCI 186X
BW: 110 Adj WWT: 724

March 18 2010
Adj YWT: 1150

LBH 20J STANMORE 31R
LCI 31R STANMORE 81T
LCI 81F ANDIE 81K
LCI KAHLUA 82H
LCI 82H KAHLUA LADY 109L
LCI SWEET DREAM 2J

E.P.D.'s		Top
SC	1.0	10%
CW	122.9	2%
Stay	-1.1	
MPI	154.8	10%
FMI	150.9	5%
Fat	-0.011	20%
REA	0.13	
Marb	0.05	40%

Fall 2011 E.P.D.'s - - Top of the breed in blue						
CE	BW	WW	YW	Milk	TM	MCE
-0.9	7.8	57.7	90.2	22.8	51.7	-0.8
		5%	10%	20%	10%	

A performance bull, that is solid red with pigment and is super sound like 81T. 109L ranks high in our herd.



LCI WB 40U NORTH STAR 888X

C02940014 LCI 888X
BW: 95 Adj WWT: 661

Feb. 14 2010
Adj YWT: 1089

CJH L1 DOMINO 0041
R 0041 NORTH STAR 40U
R STARLETTE 511
K 64H RIBSTONE LAD 157K
JTB RIBSTONE LASS 902P
LCI 9K QUIGLEY MISS ET 222M

E.P.D.'s		Top
SC	1.0	10%
CW	85.7	
Stay	-0.7	
MPI	151.5	10%
FMI	141.1	15%
Fat	-0.014	20%
REA	0.43	15%
Marb	-0.01	

Fall 2011 E.P.D.'s - - Top of the breed in blue						
CE	BW	WW	YW	Milk	TM	MCE
3.7	3.4	47.1	72.5	26.7	50.3	0.7
		30%		5%	10%	

A deep sided, moderate framed and big hip bull that is bred to be maternal.

50**LCI WB 40U NORTH STAR 803X**C02939940 LCI 803X March 03 2010
BW: 80 Adj WWT: 610 Adj YWT: 1110

CJH L1 DOMINO 0041

R 0041 NORTH STAR 40UR STARLETTE 511
LBH 20J STANMORE 31R**LCI WB 31R STANMORE LASS 859U**

JTB 157K RIBSTONE GAL 702S

Fall 2011 E.P.D.'s - - Top of the breed in blue

CE	BW	WW	YW	Milk	TM	MCE
4.0	2.9	47.5	81.3	24.3	48.0	1.3
	30%	35%	25%	10%	15%	

E.P.D.'s		Top
SC	0.9	15%
CW	89.8	
Stay	0.3	
MPI	151.2	10%
FMI	155.1	4%
Fat	-0.014	20%
REA	0.53	5%
Marb	0.07	30%

A light birth weight, moderate framed, thick with extra hair. Can be used on heifers, yet have good performance. A high milk bull with great carcass numbers.

51**LCI 838U RED STANDARD 3X**C02939743 LCI 3X Feb. 20 2010
BW: 102 Adj WWT: 702 Adj YWT: 1042

JNHR RED STANDARD 68R

LCI WB RED STANDARD 838UJTB RIBSTONE LASS 902P
LBH 6H WALDO 125P**LCI 125P WALDO LASS 8T**

LCI 266M EXPANSION MISS 131P

Fall 2011 E.P.D.'s - - Top of the breed in blue

CE	BW	WW	YW	Milk	TM	MCE
-2.4	7.3	46.2	67.3	23.0	46.1	-0.3
		40%		15%	20%	

E.P.D.'s		Top
SC	0.7	35%
CW	97.2	
Stay	-1.7	
MPI	-	
FMI	102.0	
Fat	0.009	
REA	0.01	
Marb	-0.08	

Pigment for generations in 3X, good WW and a big milk number. This fellow will raise top females.

52**LCI 838U RED STANDARD 89X**C02940021 LCI 89X Jan. 30 2010
BW: 102 Adj WWT: 643 Adj YWT: 1122

JNHR RED STANDARD 68R

LCI WB RED STANDARD 838UJTB RIBSTONE LASS 902P
LBH 72M SUNSHINE LAD 119R**LBH 119R MISS SUNSHINE 252T**

LBH 17K MISS RED DOMINO 19M

Fall 2011 E.P.D.'s - - Top of the breed in blue

CE	BW	WW	YW	Milk	TM	MCE
-0.6	6.4	45.0	75.3	18.0	40.5	0.2
		45%	45%	45%		

E.P.D.'s		Top
SC	0.7	35%
CW	94.5	
Stay	-1.3	
MPI	132.7	
FMI	127.6	40%
Fat	-0.006	35%
REA	0.03	
Marb	-0.12	

A smooth strided bull that is long sided and wide back. His dam is a moderate framed feminine young female that we think is the right type!

53**LCI 838U RED STANDARD 86X**C02940018 LCI 86X Feb. 06 2010
BW: 100 Adj WWT: 657 Adj YWT: 1234

JNHR RED STANDARD 68R

LCI WB RED STANDARD 838UJTB RIBSTONE LASS 902P
LBH 20J STANMORE 31R**LCI 31R STANMORE LASS 150T**

LCI 6N ROBIN HOOD MISS 160R

Fall 2011 E.P.D.'s - - Top of the breed in blue

CE	BW	WW	YW	Milk	TM	MCE
-3.2	9.8	52.5	94.8	21.3	47.5	0.4
		15%	5%	25%	35%	

E.P.D.'s		Top
SC	1.1	10%
CW	128.9	1%
Stay	-1.7	
MPI	141.4	35%
FMI	172.4	1%
Fat	-0.028	5%
REA	-0.03	
Marb	0.04	

Built like his dad, long as a rope. He'll breed performance into a herd!

54**LCI 159T STANMORE 203X**C02940133 LCI 203X March 14 2010
BW: 95 Adj WWT: 652 Adj YWT: 1076

LBH 20J STANMORE 31R

LCI 31R KING STANMORE 159TLCI 90M KINGSTON LADY 123R
LCI 157K RIBSTONE 46P**LCI 46P RIBSTONE GAL 145S**

LCI 90M MRS KING 65P

Fall 2011 E.P.D.'s - - Top of the breed in blue

CE	BW	WW	YW	Milk	TM	MCE
0.9	5.5	49.8	70.1	24.6	49.5	0.9
		25%		15%	10%	

E.P.D.'s		Top
SC	0.9	15%
CW	98.0	
Stay	0.5	
MPI	154.6	5%
FMI	134.5	25%
Fat	-0.007	30%
REA	0.10	
Marb	0.15	15%

Short marked, deep bodied and easy fleshing like his sire 159T. Top milk and marbling numbers.

55**LCI 159T STANMORE 6X**C02939747 LCI 6X Feb. 12 2010
BW: 98 Adj WWT: 706 Adj YWT: 1158

LBH 20J STANMORE 31R

LCI 31R KING STANMORE 159TLCI 90M KINGSTON LADY 123R
CFH 78J TRITON 107L**LCI 107L TRITON GAL 107P**

LCI 36G MARY CHERRY 119L

Fall 2011 E.P.D.'s - - Top of the breed in blue

CE	BW	WW	YW	Milk	TM	MCE
-1.0	6.5	52.8	77.6	21.7	48.1	-0.8
		15%	35%	25%	15%	

E.P.D.'s		Top
SC	0.7	
CW	111.6	5%
Stay	-0.8	
MPI	148.6	15%
FMI	129.9	35%
Fat	0.000	
REA	0.10	
Marb	0.10	20%

A googled eyed, easy fleshing and thick bull. He is athletic and will cover lots of cows.





56

LCI RED STANDARD 27X

C02944829 LCI 27X Feb. 14 2010
 BW: 103 Adj WWT: 646 Adj YWT: 1230

JNHR RED STANDARD 283M
JNHR RED STANDARD 68R
 PDHR 3X STAND LASS 72B
 LCI 157K RIBSTONE 4P
LCI 4P RIBSTONE LASS 43S
 LCI BRITTANY 27J

E.P.D.'s		Top
SC	0.8	25%
CW	109.9	10%
Stay	-0.4	
MPI	145.7	25%
FMI	129.3	35%
Fat	0.011	
REA	0.20	
Marb	-0.12	

Fall 2011 E.P.D.'s - Top of the breed in blue						
CE	BW	WW	YW	Milk	TM	MCE
-4.3	8.3	55.3	100.5	15.4	43.0	0.8
		5%	2%			

A bull that sets down the scales! His 4P dam is out of 27J, a cow that is a foundation cow here on our place.

57

LCI 838U RED STANDARD 363X

C02939870 LCI 363X Feb. 12 2010
 BW: 94 Adj WWT: 659 Adj YWT: 1175

JNHR RED STANDARD 68R
LCI WB RED STANDARD 838U
 JTB RIBSTONE LASS 902P
 LCI 157K RIBSTONE 79P
LCI BD 79P RIBSTONE GAL 300T
 BP 182E MONTANA LADY 197L

E.P.D.'s		Top
SC	0.9	15%
CW	101.9	25%
Stay	-1.2	
MPI	139.6	15%
FMI	143.7	15%
Fat	-0.012	25%
REA	0.12	
Marb	0.01	

Fall 2011 E.P.D.'s - Top of the breed in blue						
CE	BW	WW	YW	Milk	TM	MCE
-1.6	6.7	47.0	81.2	21.5	45.0	0.8
		35%	25%	25%	25%	

A bull with extra muscle and maternally strong with milk throughout the pedigree.

58

LCI 68R RED STANDARD 29X

C02939890 LCI 29X Feb. 16 2010
 BW: 104 Adj WWT: 630 Adj YWT: 1252

JNHR RED STANDARD 283M
JNHR RED STANDARD 68R
 PDHR 3X STAND LASS 72B
 96 ANDY 81F
LCI 81F ANDY GIRL 88L
 LCI 86U LOUISE LASS 198X

E.P.D.'s		Top
SC	0.4	
CW	75.2	
Stay	-1.7	
MPI	-	
FMI	139.9	20%
Fat	-0.025	5%
REA	0.37	25%
Marb	-0.25	

Fall 2011 E.P.D.'s - Top of the breed in blue						
CE	BW	WW	YW	Milk	TM	MCE
-4.6	8.4	49.9	83.0	12.0	37.0	-0.5
		25%	20%			

A clean made bull and as sound as they come with pigment.



LCI 0145 PRIME CUT 102T

LCI 102T 1395975 January 25, 2007
 BW: 93 AWW: 768 lbs AYW: 1387 lbs

SUMMITCREST PRIME CUT 1G42
THREE TREES PRIME CUT 0145
 BLACK TOOTH LADY B
 O G L BATTLE DRY 427
LCI 6G LINDA 1N
 SANDY BAR LINDA 6G

Based on Fall 2011 EPD's Black Angus

	Birth Weight	Weaning Weight	YRL Weight	Milk	Calving Ease	REA	Carcass Weight	Marb.	Fat
EPD	3.4	43	79	17	0.0	0.18	19	0.38	0.083
Top		35%	20%	35%			30%	15%	

Probably the most naturally thick and easy fleshing bull I have ever worked around. His donor cow mother Linda 1N has the same quality, such good range cattle. Super rock hard feet and clean tight udder. Stick them out on a stubble field and they will gain weight!



HF TIGER 5T

HFDF 5T 1402252 January 1, 2007
 BW: 76 AWW: 796 lbs AYW: 1338 lbs

SANDY BAR ADVANTAGE 43M

HF KODIAK 5R

WILBAR RUBY 955N
 TC FREEDOM 104

HF ECHO 84R

HFDF ECHO 6N

Tiger takes birth weights and performance to a new level. He is in the top 10% for the breed for birth weight, yet in the top 1% for WW and YW. His show accomplishments are in 2009 Grand Champion at Agribition as well as Supreme Grand Champion bull at Farmfair.

Based on Fall 2011 EPD's Black Angus

	Birth Weight	Weaning Weight	YRL Weight	Milk	Scrotal Circ.	Calving ease	REA	Marb.	Fat
EPD	-0.1	64	120	20	0.57	12.0	0.19	0.00	0.002
Top	10%	1%	1%	15%	25%	1%	30%	85%	35%

Angus Breed Average EPD's

	Birth Weight	Weaning Weight	YRL Weight	Milk	Scrotal Circ.	Calving ease	REA	Marb.	Fat
EPD	2.9	41	72	16	0.36	1.5	0.11	0.23	0.009

Angus Bull Calves



LCI 5T TIGER 201Y

LCI 201Y 1617549 Jan. 28, 2011
 BW: 75 AWW: 758

HF KODIAK 5R

HF TIGER 5T

HF ECHO 84R
 WESTERN FREEDOM 505

LCI 5R FREEDOM GIRL 33U

LCI 6G LINDA 1N



Based on Fall 2011 EPD's Black Angus (PEd Est.)

	Birth Weight	Weaning Weight	YRL Weight	Milk	Scrotal Circ.	REA	Carcass Weight	Marb.	Fat
EPD	1.8	53	100	21	0.29	0.10	21	-0.06	0.001
Top		7%	2%	10%			25%		

Genetically engineered for light birth weight and explosive growth. Stylish, thick and muscular. 201Y will be all around herd improver! Light birth weight, top 7% of the breed for WW. Top 2% for YW, top10% for milk and also good carcass merit. His dam 33U is a deep sided, easy fleshing cow out of our flush cow 1N, the dam of our 102T herdsire and is the cornerstone of our herd.



LCIB 5T TIGER 309Y

LCIB 309Y 1618380 Jan. 23, 2011
 BW: 90 AWW: 759

HF KODIAK 5R

HF TIGER 5T

HF ECHO 84R
 LCI 505 FREEDOM 109T

LCIB 109T FREEDOM GAL 332W
 EBON HILL C J BLACKCAP 36'06

A soggy, thick attractive bull out of Tiger. He is in the top 3% of the breed for WW, top 1% for YW. His dam is a first calf heifer is a high volume cow with well attached udder.



LCI 5T TIGER 119Y

LCI 119Y 1617559 Feb. 02, 2011
 BW: 70 AWW: 769

HF KODIAK 5R

HF TIGER 5T

HF ECHO 84R
 LCI 505 FREEDOM 109T

LCI 109T FREEDOM GAL 221W
 LCI DESTINY 1M

You can have it all here with this bull! 70 lb BW and a 769 lb WW. Epds show him top of the breed for BW, WW, YW. 119Y has the muscle pattern, phenotype and all over eye appeal to set him apart. You will appreciate his first calf dam sale day, she's the right kind!

Based on Fall 2011 EPD's Black Angus (PEd Est.)

	Birth Weight	Weaning Weight	YRL Weight	Milk	Scrotal Circ.	REA	Carcass Weight	Marb.	Fat
EPD	3.4	56	102	19	19	0.29	0.10	0.00	0.001
Top		3%	1%	20%		35%			

Based on Fall 2011 EPD's Black Angus (PEd Est.)

	Birth Weight	Weaning Weight	YRL Weight	Milk	Scrotal Circ.	REA	Carcass Weight	Marb.	Fat
EPD	-0.8	53	99	15	0.29	0.07	16	0.07	-0.006
Top	5%	7%	2%						20%



LCI 5T TIGER 112Y

LCI 112Y 1617555 Jan. 31, 2011
 BW: 86 AWW: 763

HF KODIAK 5R

HF TIGER 5T

HF ECHO 84R
 LCI 505 FREEDOM 109T

LCI 109T FREEDOM GAL 129W
 LCI 878 HOPE 46S

A bull that can be used on heifers, yet get a big calf at weaning. Top of the breed epds! 112Y is a long sided, big hip calf that will be a herd improver.



LCI 102T PRIME CUT 192Y

LCI 192Y 1617557 Feb. 01, 2011
 BW: 100 AWW: 824

THREE TREES PRIME CUT

LCI 0145 PRIME CUT 102T

LCI 6G LINDA 1N
 CUDLOBE YELLOWSTONE 1'03

LCI JASMINE ET 53R

LCI FAITH 4L

A heavy weight at an 824 lb WW! Extra muscle, super stout, yet clean made. 53R is a producer with sons working at Burton Cattle Co. and Todd Coverdales. 192Y will produce heavy steers that sell so well!

Based on Fall 2011 EPD's Black Angus (PEd Est.)

	Birth Weight	Weaning Weight	YRL Weight	Milk	Scrotal Circ.	REA	Carcass Weight	Marb.	Fat
EPD	2.6	55	100	21	0.29	0.14	16	0.13	-0.012
Top		4%	2%						10%

Based on Fall 2011 EPD's Black Angus (PEd Est.)

	Birth Weight	Weaning Weight	YRL Weight	Milk	Scrotal Circ.	REA	Carcass Weight	Marb.	Fat
EPD	7.5	49	88	18	n/a	0.05	17	0.46	0.040
Top		15%	10%	25%				9%	



LCI STRATEGY 209Y

LCI 209Y 1617587 Feb. 28, 2011
BW: 85 AWW: 798

S A F STRATEGY 9015

LCI 9015 STRATEGY 190W

LCI REBA ET 106R

B/R NEW FRONTIER 095

LCI NEW FRONTIER LADY 153P

GH MONARCH ROSE 18K

798 lb WW, yet a 85 lb BW.
Top epds with marbling at .47 and in the top 8% of the breed. A end of February calf that will grow into one of the best!



Based on Fall 2011 EPD's Black Angus (PEd Est.)

	Birth Weight	Weaning Weight	YRL Weight	Milk	Scrotal Circ.	REA	Carcass Weight	Marb.	Fat
EPD	4.1	48	88	15	0.37	0.10	23	0.47	-0.024
Top		15%	10%				15%	8%	3%



LCI 190W STRATEGY 168Y

LCI 168Y 1617578 Feb. 13, 2011
BW: 80 AWW: 703

S A F STRATEGY 9015

LCI 9015 STRATEGY 190W

LCI REBA ET 106R

WESTERN FREEDOM 505

LCI MISS FREEDOM 135T

WESTERN JEANNA 12R

A bull that could be used on heifers, but has the performance to use on cows. You could build a cow herd around 168Y with super females in his pedigree.



LCI 5R FREEDOM 98Y

LCI 98Y 1617562 Feb. 06, 2011
BW: 88 AWW: 750

TC FREEDOM 104

WESTERN FREEDOM 505

WESTERN MISSIE 5N

LCI 505 FREEDOM 109T

LCI 109T FREEDOM GAL 219W

EBON HILL BLACKCAP 9'05

Extra stout and built like a brick. Light birth weight, very top EPD's for WW and YW. A super first calf heifer for a dam.

Based on Fall 2011 EPD's Black Angus (PEd Est.)

	Birth Weight	Weaning Weight	YRL Weight	Milk	Scrotal Circ.	REA	Carcass Weight	Marb.	Fat
EPD	3.1	45	81	19	n/a	-0.11	20	0.35	-0.015
Top		15%	10%				15%	8%	3%

Based on Fall 2011 EPD's Black Angus (PEd Est.)

	Birth Weight	Weaning Weight	YRL Weight	Milk	Scrotal Circ.	REA	Carcass Weight	Marb.	Fat
EPD	2.7	55	98	20	0.29	0.17	17	0.06	-0.004
Top		25%	20%	20%			25%	15%	10%



LCI 190W STRATEGY 186Y

LCI 186Y 1617595 March 10, 2011
BW: 81 AWW: 821

S A F STRATEGY 9015

LCI 9015 STRATEGY 190W

LCI REBA ET 106R

WESTERN FREEDOM 505

LCI MISS FREEDOM 105T

LCI NEW FRONTIER LADY 153P

A curve bender! Birth weight at 81 lbs and a weaning weight of 821 lbs. Great epds, top 3% of the breed for WW, top 2% for YW and top 25% for milk. His carcass numbers are also very positive. 105T always brings in top end calves!

Based on Fall 2011 EPD's Black Angus (PEd Est.)

	Birth Weight	Weaning Weight	YRL Weight	Milk	Scrotal Circ.	REA	Carcass Weight	Marb.	Fat
EPD	4.3	56	101	18	n/a	0.06	25	0.34	-0.027
Top		3%	2%	25%			10%	20%	2%



68

LCI 102T PRIME CUT 195Y

LCI 195Y 1617561 Feb. 4, 2011
 BW: 92 AWW: 753

THREE TREES PRIME CUT

LCI 0145 PRIME CUT 102T

LCI 6G LINDA IN
 EBON HILL BLACK DESIGN

EBON HILL BLACKCAP 290*05

EBON HILL BLACKCAP 290*95

A good thick deep sided 102T son. 290R is a real producer! There are sons working at Daley Ranches and McNab Ranch.

Based on Fall 2011 EPD's Black Angus (PEd Est.)

	Birth Weight	Weaning Weight	YRL Weight	Milk	Scrotal Circ.	REA	Carcass Weight	Marb.	Fat
EPD	4.9	42	76	16	n/a	0.12	17	0.35	0.035
Top								15%	

71

LCI 5R FREEDOM 129Y

LCI 129Y 1617560 Feb. 03, 2011
 BW: 87 AWW: 770

TC FREEDOM 104

WESTERN FREEDOM 505

WESTERN MISSIE 5N
 THREE TREES PRIME CUT 0145

LCI 0145 DESTINY 136S

LCI NEW FRONTIER LADY 45P

A pedigree full of performance! 129Y is in the top 2% of the breed for WW, 1% for YW and yet has a reasonable birth weight.

Based on Fall 2011 EPD's Black Angus (PEd Est.)

	Birth Weight	Weaning Weight	YRL Weight	Milk	Scrotal Circ.	REA	Carcass Weight	Marb.	Fat
EPD	3.5	58	103	17	0.52	-0.13	22	0.21	0.004
Top		2%	1%	35%	30%		20%		

73

LCI 102T PRIME CUT 150Y

LCI 150Y 1617580 Feb. 21, 2011
 BW: 85 AWW: 748

THREE TREES PRIME CUT

LCI 0145 PRIME CUT 102T

LCI 6G LINDA IN
 EBON HILL 1531 AMBUSH 153*04

EBONHILL BARDELLA 565*06

EBON HILL BARDELLA 265*04

If you want easy doing and low maintenance take this fellow home. Both 102T and this Ebon Hill cow offer this.

Based on Fall 2011 EPD's Black Angus (PEd Est.)

	Birth Weight	Weaning Weight	YRL Weight	Milk	Scrotal Circ.	REA	Carcass Weight	Marb.	Fat
EPD	3.5	45	73	12	n/a	0.15	14	0.35	0.038
Top		25%	35%			35%		15%	

69

LCI 190W STRATEGY 106Y

LCI 106Y 1617584 March 09, 2011
 BW: 78 AWW: 738

S A F STRATEGY 9015

LCI 9015 STRATEGY 190W

LCI REBA ET 106R
 LCI 0145 PRIME CUT 102T

LCI 102T LILY 68W

LCI MISS FREEDOM 21T

With a 78 lb birth weight, this is definitely a heifer bull as is his sire 190W. All of 190W's calves out of heifers were born unassisted, yet again good performance.

Based on Fall 2011 EPD's Black Angus (PEd Est.)

	Birth Weight	Weaning Weight	YRL Weight	Milk	Scrotal Circ.	REA	Carcass Weight	Marb.	Fat
EPD	1.6	44	81	18	n/a	0.12	20	0.38	0.009
Top	30%	30%	20%	25%			25%	15%	

70

LCI 190W STRATEGY 80Y

LCI 80Y 1617570 Feb. 08, 2011
 BW: 87 AWW: 745

S A F STRATEGY 9015

LCI 9015 STRATEGY 190W

LCI REBA ET 106R
 LCI 505 FREEDOM 109T

LCI 109T FREEDOM GAL 196W

EBON HILL BLACKCAP 290*05

Again a bull you can use on heifers, but enough performance to use on cows. The dam is a Freedom first calf heifer with ample milk.

Based on Fall 2011 EPD's Black Angus (PEd Est.)

	Birth Weight	Weaning Weight	YRL Weight	Milk	Scrotal Circ.	REA	Carcass Weight	Marb.	Fat
EPD	3.6	45	82	19	-	0.08	21	0.41	-0.016
Top		25%	15%	20%			25%	10%	9%

72

LCI 102T PRIME CUT 315Y

LCIB 315Y 1618381 Jan. 30, 2011
 BW: 82 AWW: 706

THREE TREES PRIME CUT

LCI 0145 PRIME CUT 102T

LCI 6G LINDA IN
 EBON HILL BLACK DESIGN

EBON HILL BLACKCAP 390*05

EBON HILL BLACKCAP 290*97

A big hipped calf with length and plenty of middle. Dam is a hard working Ebon Hill cow.

Based on Fall 2011 EPD's Black Angus (PEd Est.)

	Birth Weight	Weaning Weight	YRL Weight	Milk	Scrotal Circ.	REA	Carcass Weight	Marb.	Fat
EPD	2.4	39	71	17	-	0.14	16	0.34	0.044
Top				35%				20%	

74

LCI 5R FREEDOM 87Y

LCI 87Y 1617546 Jan. 26, 2011
 BW: 85 AWW: 709

TC FREEDOM 104

WESTERN FREEDOM 505

WESTERN MISSIE 5N
 LCI 0145 PRIME CUT 102T

LCI 102T PRIME CUT MISS 96W

LCI MISS FREEDOM 54T

A deep sided functional calf that 505 is known for. Light birth weight, top performance, and good milk. His EPD's are very positive.

Based on Fall 2011 EPD's Black Angus (PEd Est.)

	Birth Weight	Weaning Weight	YRL Weight	Milk	Scrotal Circ.	REA	Carcass Weight	Marb.	Fat
EPD	2.9	51	92	20	0.52	-0.12	21	0.10	-0.009
Top		10%	7%	15%	30%		25%		15%

Hereford Females



Just had to put in the sale two 107R daughters with 40U daughters at side to exhibit the tremendous maternal side of 107R and the special nick 40U does with this cross. Take the factory home or the fancy newest genetic heifer calf! It's your choice!

82

LCI 107R RIBSTONE GAL 255W

C02925747 LCI 255W March 30 2009
 BW: 85 Adj WWT: 675 Adj YWT: 866

K 64H RIBSTONE LAD 157K

LCI 157K RIBSTONE 107R

LCI 82H KAHLUA ANDIE 174M
 SMITHSTON TAM O'SHANTER ET2

LCI T097 TAM O' LASS 43N

LCI SOUTH ALTA LASS 290F

Fall 2011 E.P.D.'s - Top of the breed in blue							E.P.D.'s		Top
CE	BW	WW	YW	Milk	TM	MCE	SC		
1.4	4.1	47.5	82.2	31.8	55.6	3.1	1.2		3%
		25%	15%	1%	2%	5%	96.7		
							Stay	1.5	
							MPI	163.8	2%
							FMI	174.5	1%
							Fat	-0.036	3%
							REA	0.40	15%
							Marb	0.07	25%

Red eyed, short marked, level uddered, wide based and plenty of volume. Super epds, in the top 1% of the breed for milk, great carcass and performance numbers. Exposed to 8166 from May 4 - July 16

83

LCI NORTH STAR LASS 108Y

C02953065 LCI 108Y Jan. 27 2011
 BW: 75 Adj WWT: 716

CJH L1 DOMINO 0041

R 0041 NORTH STAR 40U

R STARLETTE 511
 LCI 157K RIBSTONE 107R

LCI 107R RIBSTONE GAL 255W

LCI T097 TAM O' LASS 43N

Fall 2011 E.P.D.'s - Top of the breed in blue							E.P.D.'s		Top
CE	BW	WW	YW	Milk	TM	MCE	SC		
4.3	2.2	48.3	80.2	28.0	52.1	1.9	1.0		10%
		20%	20%	20%	4%	4%	87.4		
							Stay	0.5	
							MPI	-	
							FMI	168.0	1%
							Fat	-0.033	3%
							REA	0.65	2%
							Marb	-0.02	

Red eyed like mom, with a 75 lb BW, 716 WW, index 107, again top epds! A flashy long fronted angular heifer that will show. But the best part is what she will do for you in the pasture!



84

LCI 107R RIBSTONE GAL 226W

C02925741 LCI 226W March 03 2009
 BW: 101 Adj WWT: 732 Adj YWT: 869

K 64H RIBSTONE LAD 157K

LCI 157K RIBSTONE 107R

LCI 82H KAHLUA ANDIE 174M
 LRD 301 EXTRA LAD ET 46E

LCI MADISON DEBI 183G

LRD MISS PRESIDENT 44E

Fall 2011 E.P.D.'s - Top of the breed in blue							E.P.D.'s		Top
CE	BW	WW	YW	Milk	TM	MCE	SC		
-1.6	7.2	62.1	100.2	29.8	60.8	0.8	1.5		1%
		1%	1%	3%	1%		105.5		15%
							Stay	-0.1	
							MPI	177.6	1%
							FMI	166.8	2%
							Fat	-0.023	10%
							REA	0.50	5%
							Marb	-0.02	

Pigment on eyes and udder, this young cow is pure cow with absolute power and quality built into an efficient moderate package. Top of the breed epds takes all the guess work out of this cow! Exposed to 8116 from May 4 to July 16

85

LCI NORTH STAR LASS 96Y

C02953064 LCI 96Y Jan. 31 2011
 BW: 88 Adj WWT: 744

CJH L1 DOMINO 0041

R 0041 NORTH STAR 40U

R STARLETTE 511
 LCI 157K RIBSTONE 107R

LCI 107R RIBSTONE GAL 226W

LCI MADISON DEBI 183G

Fall 2011 E.P.D.'s							E.P.D.'s		Top
CE	BW	WW	YW	Milk	TM	MCE	SC		
2.0	5.1	58.8	94.8	27.0	56.4	0.1	1.1		
		2%	3%	5%	2%		97.7		
							Stay	-0.3	
							MPI	-	
							FMI	169.8	1%
							Fat	-0.029	5%
							REA	0.71	1%
							Marb	-0.08	

All wrapped up here in an ideal combination heifer...balance, rib shape, style, and extension. Wicked EPD's and a gorgeous productive dam. It's going to be hard to choose mom or daughter!

Bred Yearling Heifers Right Out of The Top of The Herd!



86 **LCI 40U RED STANDARD MISS 90X**
 C02940022 LCI 90X Jan 29 2010
 BW: 89 Adj WWT: 686 Adj YWT: 958

							E.P.D.'s		Top
CJH LI DOMINO 0041							SC	1.0	10%
R 0041 NORTH STAR 40U							CW	105.8	15%
R STARLETTE 511							Stay	0.5	
LCI 157K RIBSTONE 4P							MPI	160.4	4%
LCI 4P GILLIAN 65S							FMI	187.3	1%
LCI BD 107L LA TOYA 160N							Fat	-0.041	1%
Fall 2011 E.P.D.'s - Top of the breed in blue							REA	0.67	2%
CE	BW	WW	YW	Milk	TM	MCE	Marb	-0.03	
3.4	3.9	57.4	95.2	21.1	49.8	1.0			
		5%	5%	25%	25%				

Crisp lines, level design and well balanced. A 40U daughter out of a 4P mother adds milk and performance. A good set of EPD's! AI to 8116 on May 2/11 and exposed to LCI 136X from May 23 to July 1.

87 **LCI 107R RIBSTONE MISS 167X**
 C02940083 LCI 167X Feb. 17 2010
 BW: 92 Adj WWT: 600 Adj YWT: 743

							E.P.D.'s		Top
K 64H RIBSTONE LAD 157K							SC	1.5	35%
LCI 157K RIBSTONE 107R							CW	91.0	
LCI 82H KAHLUA ANDIE 174M							Stay	-0.2	
BP ROBIN HOOD 6N							MPI	156.8	5%
LCI 6N ROBIN HOOD MISS 99R							FMI	158.2	3%
LCI 82H MISS KAHLUA 91K							Fat	-0.038	2%
Fall 2011 E.P.D.'s - Top of the breed in blue							REA	0.23	
CE	BW	WW	YW	Milk	TM	MCE	Marb	-0.18	
1.0	5.1	48.4	76.8	28.6	52.8	1.7			
		30%	35%	3%	5%	30%			

Feminine, long and well balanced. She comes from a cowline that excels in udder attachment, ideal numbers, and sound structure. AI to 8116 on May 2/11 and exposed to LCIB 370X from May 23 to July 1.



88 **LCI 107R RIBSTONE LASS 9X**
 C029439756 LCI 9X Feb. 16 2010
 BW: 84 Adj WWT: 649 Adj YWT: 941

							E.P.D.'s		Top
K 64H RIBSTONE LAD 157K							SC	1.3	3%
LCI 157K RIBSTONE 107R							CW	86.6	
LCI 82H KAHLUA ANDIE 174M							Stay	0.8	
LCI 6K KINGSTON 90M							MPI	162.1	
LCI 90M KINGSTON GIRL 147R							FMI	167.1	2%
LCI 172H DUNBAR GIRL 138K							Fat	-0.023	5%
Fall 2011 E.P.D.'s							REA	0.51	5%
CE	BW	WW	YW	Milk	TM	MCE	Marb	0.17	10%
2.1	3.9	50.3	83.5	27.4	52.5	2.4			
		25%	20%	5%	5%	20%			

Nice spread numbers! Out of a cowline that offers that exclusive trait. Short marked attractive profile. Top epds all across the board. AI to 8116 on May 2/11 and exposed to LCIB 370X from May 23 to July 1.

89 **LCI 838U RED STANDARD MISS 95X**
 C02940026 LCI 95X Jan 23 2010
 BW: 98 Adj WWT: 649 Adj YWT: 945

							E.P.D.'s		Top
JNHR RED STANDARD 68R							SC	1.1	10%
LCI WB RED STANDARD 838U							CW	127.6	20%
JTB RIBSTONE LASS 902P							Stay	-1.0	
LCI 157K RIBSTONE 4P							MPI	142.2	35%
LCI 4P RIBSTONE LASS 138T							FMI	162.4	2%
LCI 155N MRS KING 117R							Fat	-0.018	15%
Fall 2011 E.P.D.'s							REA	-0.09	
CE	BW	WW	YW	Milk	TM	MCE	Marb	0.08	30%
-3.2	9.6	51.7	92.6	20.8	46.6	-0.1			
		20%	10%	30%	20%				

Rock solid maternal and performance genetics behind this heavy weight bred heifer. 138T is a 4P daughter with exceptional udder quality and has the extra pigment 95X has AI to 8116 on May 2/11 and exposed to LCIB 370X from May 23 to July 1.

Angus Females

Simply put, these two heifer calves are the very best of the best!
Being out of Tiger only makes it better!



90

LCI 5T TIGER MISS 136Y

LCI 136Y 1617551 Jan. 29, 2011
BW: 90 AWW: 793

HF KODIAK 5R
HF TIGER 5T
HF ECHO 84R
THREE TREES PRIME CUT 0145
LCI 0145 LINDA 132S
LCI NEW DESIGN MISS 143P

Power and profile in one package! This heifer has so much of everything...WW 793 lbs, Index 114, 1% for top of the breed for WW and YW, top 10% for milk. Very good marbling and REA. A mother out of Prime Cut that doesn't miss. Two sisters of 136Y are working in our herd. She definitely will work as a show heifer and will produce herdsires!

91

LCI 5T TIGER MISS 178Y

LCI 178Y 1617578 Feb. 16, 2011
BW: 100 AWW: 782

HF KODIAK 5R
HF TIGER 5T
HF ECHO 84R
WESTERN FREEDOM 505
LCI MISS FREEDOM 152T
LCI JEWELS ET 67R

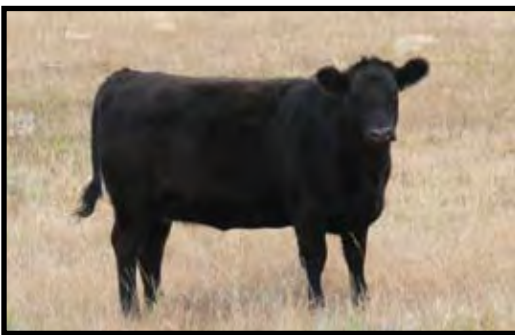
A show prospect! Loads of volume and shape with a real cool look from the side. WW 782 lbs and Index 110. Top of the breed again for WW, YW, and milk. Generations of elite females in 178Y. The famous Echo cow and 67R is a flush cow out of the Rose donor female.

Based on Fall 2011 EPD's Black Angus (PEd Est.)

	Birth Weight	Weaning Weight	YRL Weight	Milk	Scrotal Circ.	REA	Carcass Weight	Marb.	Fat
EPD	2.5	61	108	21	0.29	0.31	16	0.31	0.038
Top		1%	1%	10%		10%		20%	

Based on Fall 2011 EPD's Black Angus (PEd Est.)

	Birth Weight	Weaning Weight	YRL Weight	Milk	Scrotal Circ.	REA	Carcass Weight	Marb.	Fat
EPD	6.2	68	117	21	0.29	0.06	20	0.08	-0.019
Top		1%	1%	10%			25%		6%



Top end
Angus
bred heifers
Aid to Tiger.



92

LCI 26K OBJECTIVE MISS 119X

LCI 119X 1553633 Jan. 31, 2010
BW: 68 AWW: 720 AYW: 982

S S TRAVELER 6807 T510
S S OBJECTIVE T510 OT26
S S MISS RITA R 0117R8
WESTERN WIDESPREAD 1L
WESTERN JEANA 12R
RIR JEANA 19M

An Objective daughter that is clean fronted, added volume, hindquarter, and eye appeal. Top epd profile right across the board. Her dam is a moderate framed Western Widespread dam with a perfect udder and rock solid feet.

AI to Tiger on May 2/11 and exposed to LCI 105X from May 23 - July 1.

Based on Fall 2011 EPD's Black Angus (PEd Est.)

	Birth Weight	Weaning Weight	YRL Weight	Milk	Calving Ease	REA	Carcass Weight	Marb.	Fat
EPD	0.8	58	99	21	10.0	-0.02	6	0.55	-0.041
Top	15%	2%	2%	10%	4%			5%	1%

93

LCI 102T PRIME CUT MISS 171X

LCI 171X 1553625 Jan. 24, 2010
BW: 73 AWW: 685 AYW: 993

THREE TREES PRIME CUT 0145
LCI 0145 PRIME CUT 102T
LCI 6G LINDA 1N
S A R NEW TREND 4100 2080
ANNIE K OF PEAK DOT 434S
DOUBLE AA ANNIE K 213'97

A 102T daughter that exhibits capacity, performance and do ability. Out of a Peak Dot cow that has produced well for us.

AI to Tiger on May 2/11 and exposed to LCI 105X from May 23 - July 1

Based on Fall 2011 EPD's Black Angus (PEd Est.)

	Birth Weight	Weaning Weight	YRL Weight	Milk	Calving Ease	REA	Carcass Weight	Marb.	Fat
EPD	2.6	41	78	14	3.0	0.48	17	-0.05	0.052
Top			25%			3%			